



# Comprehensive hygiene monitoring

Dipslides – plastic paddles with several combinations of the microbiological media on both sides, designed to support the growth of specific microorganisms. Easy to use, provide reliable results within 24-48 hours. The best tool for testing surfaces, solid materials, and liquids.

## ECONOMICAL

Eliminates swabbing, plate pouring, counting

## EASY TO USE

Use directly on the work surface, dip into fluids or transfer from conventional swab

## 2 IN 1

Different combinations of the selective agar on both sides of the paddle

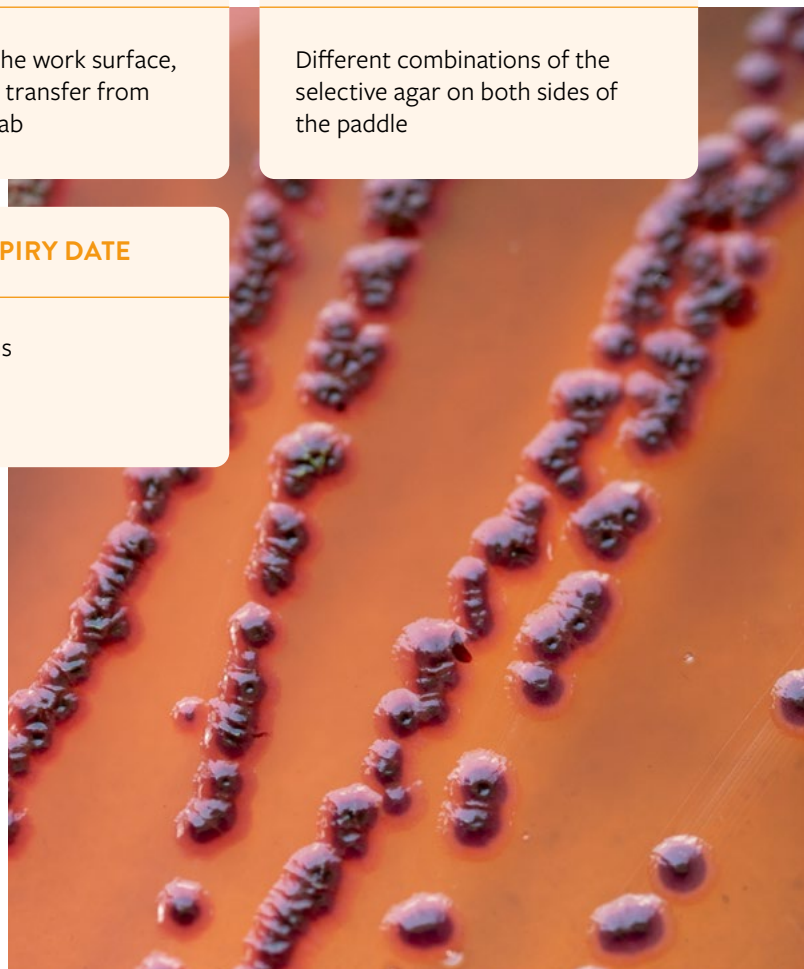
## HIGH SPECIFICITY

Ensures reliable results as per conventional methods

## LONG EXPIRY DATE

Even to 8 months

- For surfaces, liquids, solid and semi-solid samples
- Quick preparation time; no additional equipment required
- Read results without opening the tube with an easy evaluation chart
- Wide range of agar media combinations



Cat. no.	Name	Description	Package
DP 01	TSA LAB-AGAR™ with TTC / ROSE BENGAL with CHLORAMPHENICOL LAB-AGAR™	TVC + Indicator / Yeast Molds	box / 20 dipslides
DP 02	PCA LAB-AGAR™ / ROSE BENGAL with CHLORAMPHENICOL LAB-AGAR™	TVC / Yeast Molds	box / 20 dipslides
DP 03	PCA LAB-AGAR™ / LEGIONELLA GVPC LAB-AGAR™	TVC / <i>Legionella</i>	box / 20 dipslides
DP 04	PCA LAB-AGAR™ / VRBL LAB-AGAR™	TVC / Coli group	box / 20 dipslides
DP 05	NUTRIENT LAB-AGAR™ / NUTRIENTLAB-AGAR™ with TTC	TVC / TVC + Indicator	box / 20 dipslides
DP 06	PCA LAB-AGAR™ / VRBG LAB-AGAR™	TVC / <i>Enterobacterales</i>	box / 20 dipslides
DP 07	PCA LAB-AGAR™ / PCA LAB-AGAR™	TVC / TVC	box / 20 dipslides
DP 08	PCA LAB-AGAR™ / TSA LAB-AGAR™ with TWEEN and LETHEEN	TVC / TVC + N	box / 20 dipslides
DP 09	VRBG LAB-AGAR™ / VRBG LAB-AGAR™	<i>Enterobacterales</i> / <i>Enterobacterales</i>	box / 20 dipslides
DP 10	SABOURAUD with CHLORAMPHENICOL LAB-AGAR™ / SABOURAUD with CHLORAMPHENICOL LAB-AGAR™	Yeast Molds / Yeast Molds	box / 20 dipslides
DP 11	DE NEUTRAL LAB-AGAR™ / DE NEUTRAL LAB-AGAR™	TVC / TVC	box / 20 dipslides
DP 12	CLED LAB-AGAR™ / MAC CONKEY LAB-AGAR™	For urinary tract infections	box / 20 dipslides
DP 13	MAC CONKEY LAB-AGAR™ / CETRIMIDE LAB-AGAR™	<i>Enterobacterales</i> / <i>Pseudomonas spp.</i>	box / 20 dipslides
DP 15	VRBG LAB-AGAR™ / TBX LAB-AGAR™	<i>Enterobacterales</i> / <i>E. coli</i>	box / 20 dipslides
DP 17	PCA LAB-AGAR™+ TTC + 4N / VRBG LAB-AGAR™ + 4N	TVC + Indicator+N / <i>Enterobacterales</i> + N	box / 20 dipslides
DP 18	CHROMOGENIC SALMONELLA LAB-AGAR™ / CHROMOGENIC SALMONELLA LAB-AGAR™	<i>Salmonella spp.</i> / <i>Salmonella spp.</i>	box / 20 dipslides
DP 21	PCA LAB-AGAR™ with TTC / MAC Conkey LAB-AGAR™	TVC + Indicator / <i>Enterobacterales</i>	box / 20 dipslides
DP 22	ROSE BENGAL with CHLORAMPHENICOL LAB-AGAR™ / ROSE BENGAL with CHLORAMPHENICOL LAB-AGAR™	Yeast Molds / Yeast Molds	box / 20 dipslides
DP 23	NUTRIENT LAB-AGAR™ with TTC / NUTRIENT LAB-AGAR™ with TTC	TVC + Indicator / TVC + Indicator	box / 20 dipslides
DP 25	BAIRD PARKER LAB-AGAR™ + TTC / VRBG LAB-AGAR™	<i>Staphylococcus coagulase(+)</i> + Indicator / <i>Enterobacterales</i>	box / 20 dipslides
DP 26	PCA LAB-AGAR™ + TTC / MALT EXTRACT LAB-AGAR™	TVC + Indicator / Yeast Molds	box / 20 dipslides
DP 27	CHROMOGENIC LISTERIA LAB-AGAR™ (ISO 11290) / CHROMOGENIC LISTERIA LAB-AGAR™ (ISO 11290)	<i>Listeria</i> / <i>Listeria</i>	box / 20 dipslides
DP 28	TRYPTONE SOYA LAB-AGAR™ with TTC (ISO 22964) / VIOLET RED BILE LACTOSE LAB-AGAR™ (ISO 4832)	TVC + Indicator / Coli group	box / 20 dipslides

**IF YOU WANT TO KNOW MORE, PLEASE CONTACT:**

**MICROBIOLOGY DEPARTMENT**

microbiology@biomaxima.com

**EXPORT DEPARTMENT**

export@biomaxima.com

+48 81 745 51 40 | + 48 81 467 90 62